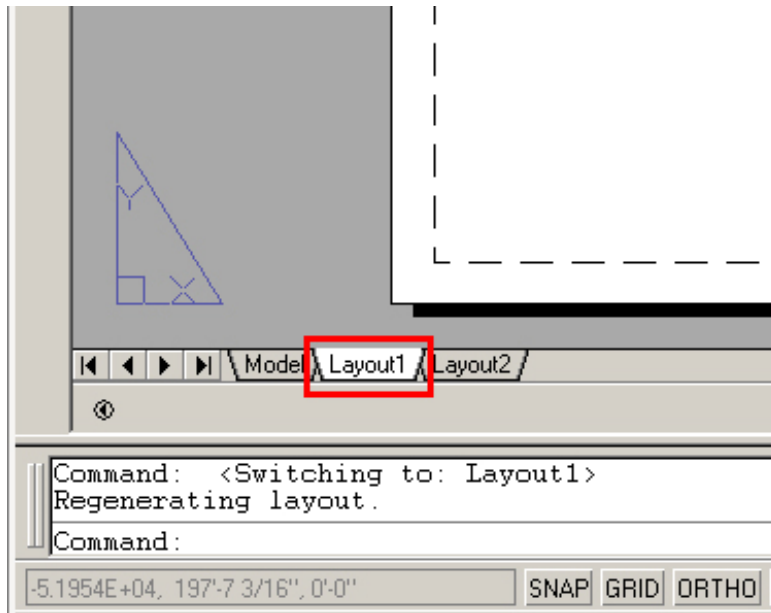
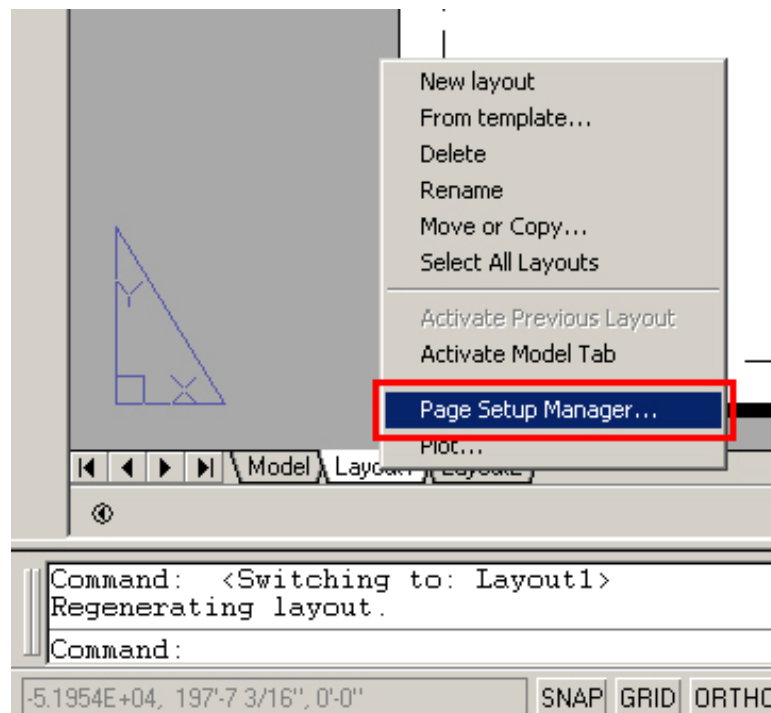


INSTRUCTIONS FOR PUBLISHING TO A DWF FILE IN AUTOCAD

- a) Select a blank layout

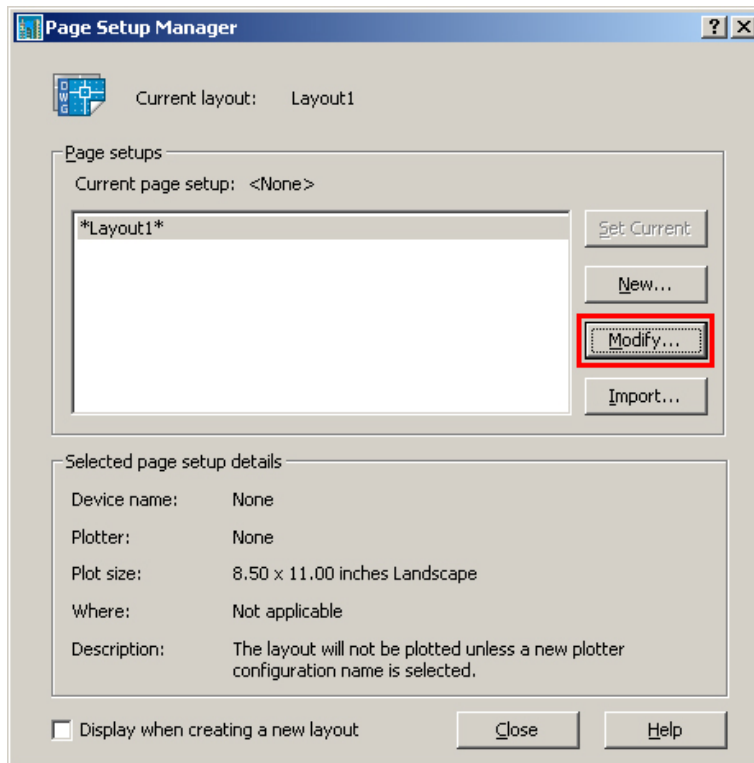


- b) If the page setup dialog box does not automatically display, right click on the layout tab and select **Page Setup Manager**.



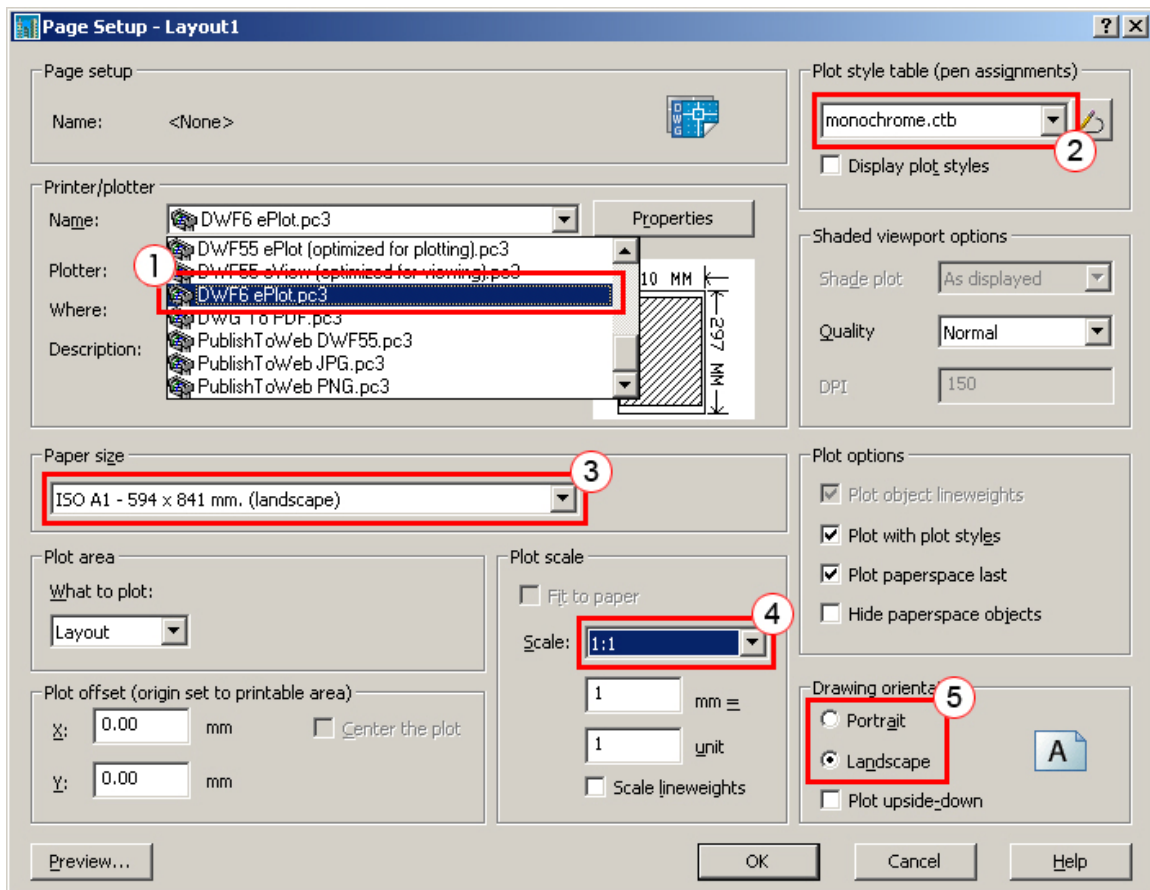
INSTRUCTIONS FOR PUBLISHING TO A DWF FILE IN AUTOCAD

c) Click on **Modify**



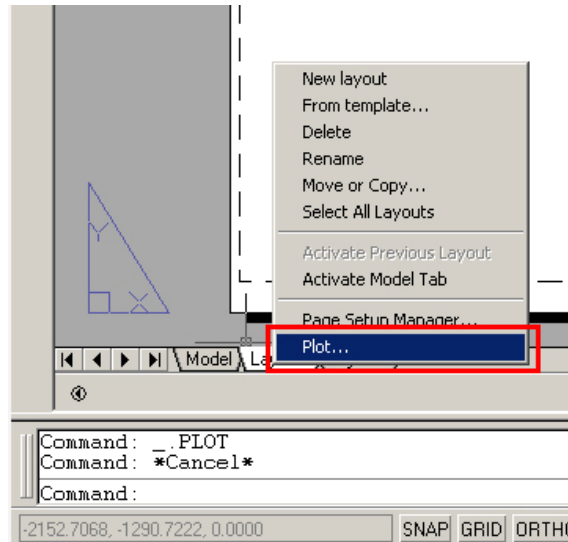
INSTRUCTIONS FOR PUBLISHING TO A DWF FILE IN AUTOCAD

- d) 1 - Select **DWF6 ePlot.pc3** from printer list
- 2 - Specify Plot Style
- 3 - Select Paper Size
- 4 - Plot scale should ALWAYS be set to 1:1. This has no relationship to the viewport scale.
- 5 - Select Drawing orientation.
- 6 - Preview the drawing if required, before clicking OK to exit the page setup dialog box.

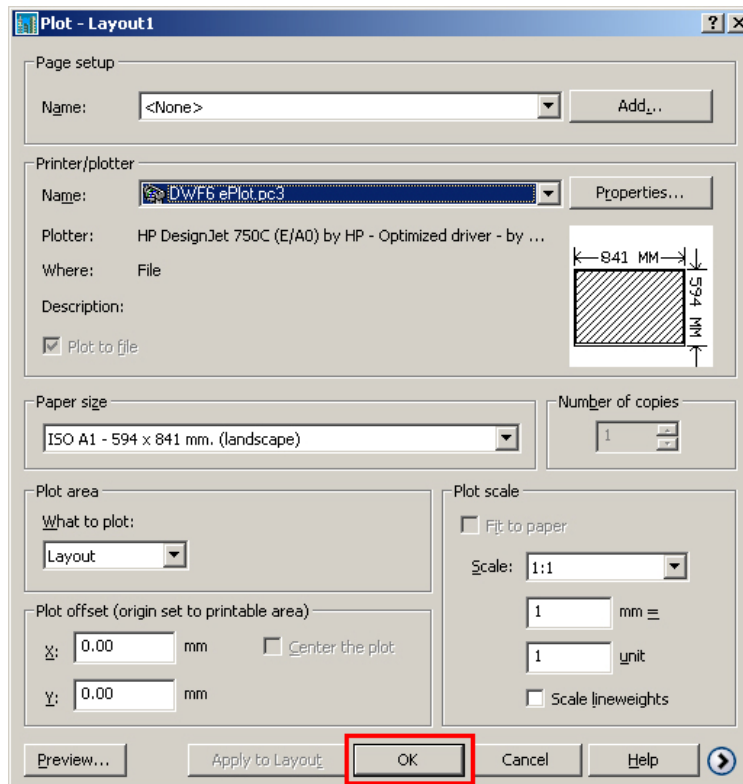


INSTRUCTIONS FOR PUBLISHING TO A DWF FILE IN AUTOCAD

- e) When you are satisfied with the page setup and preview, right click on the layout tab and select **Plot**.

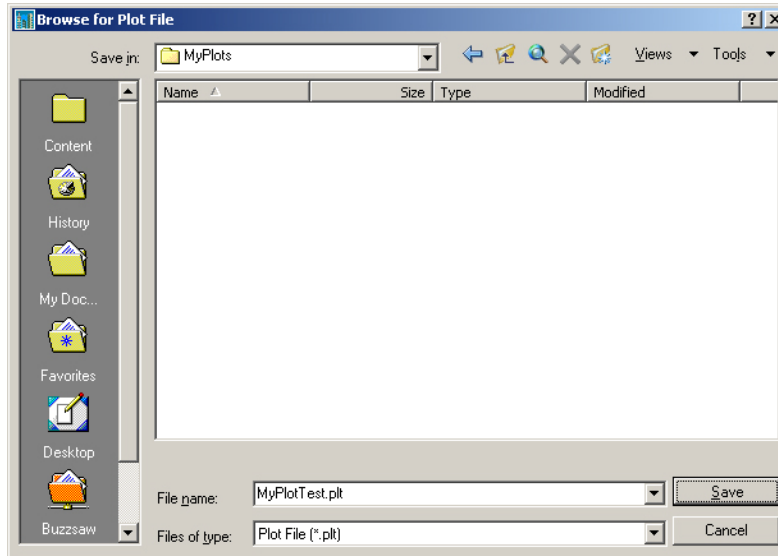


- f) **Click OK** – You should not have to change anything in this dialog box.



INSTRUCTIONS FOR PUBLISHING TO A DWF FILE IN AUTOCAD

- g) Browse to a location where you want to save the plot file, then give it an appropriate name.



The plot procedure is now complete.

To send a DWF file to HD Finch for printing:

- Email to **info@hdfinch.co.uk**

or:

- Go to **www.hdfinch.co.uk**
- Click on **Submit a plot file**
- **Follow the instructions to upload the plot file.**