

INSTRUCTIONS FOR PLOTTING TO A FILE PRE-AUTOCAD 2000

The easiest way to install a printer for AutoCAD 14 is to use one of the built-in printer drivers.

The HP750C is used to print B+W drawings

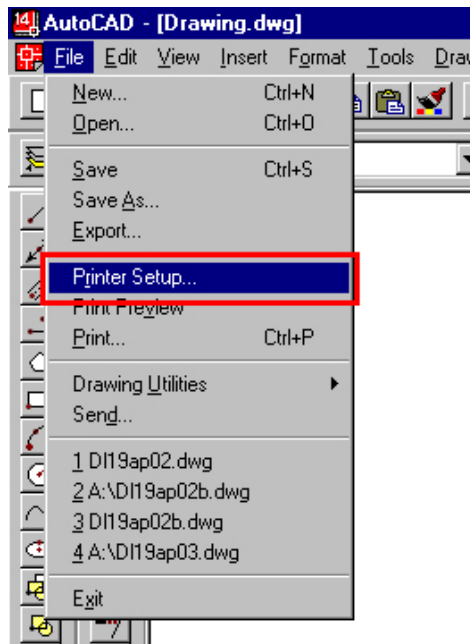
The HP1050C is used to print COLOUR drawings.

This tutorial is split into two sections:

- 1) Installing the HP750C and HP1050C printer drivers
- 2) Plotting to a file in AutoCAD 14

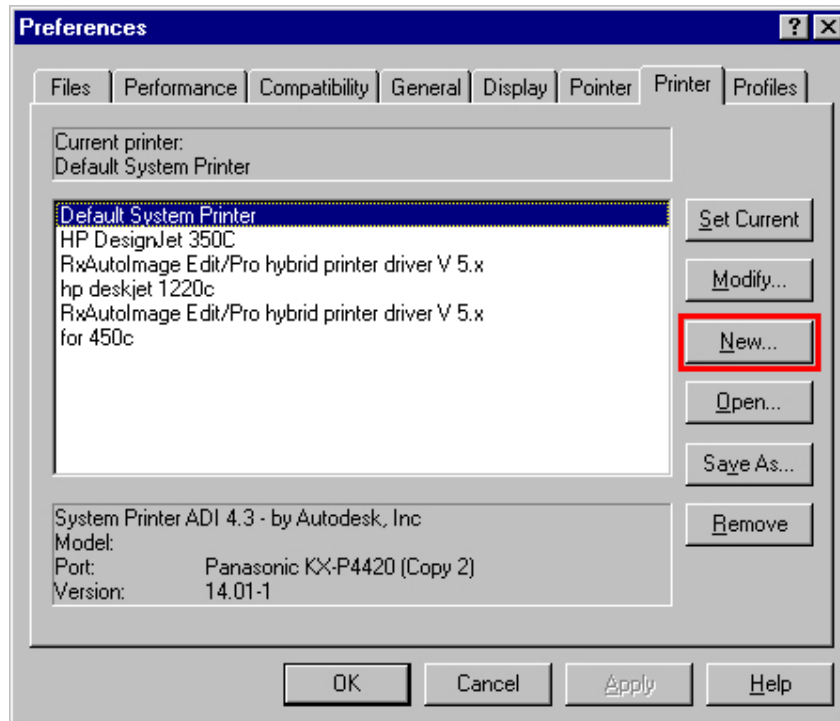
1) Installing the HP750C and HP1050C printer drivers.

a) Go to File > Printer Setup.



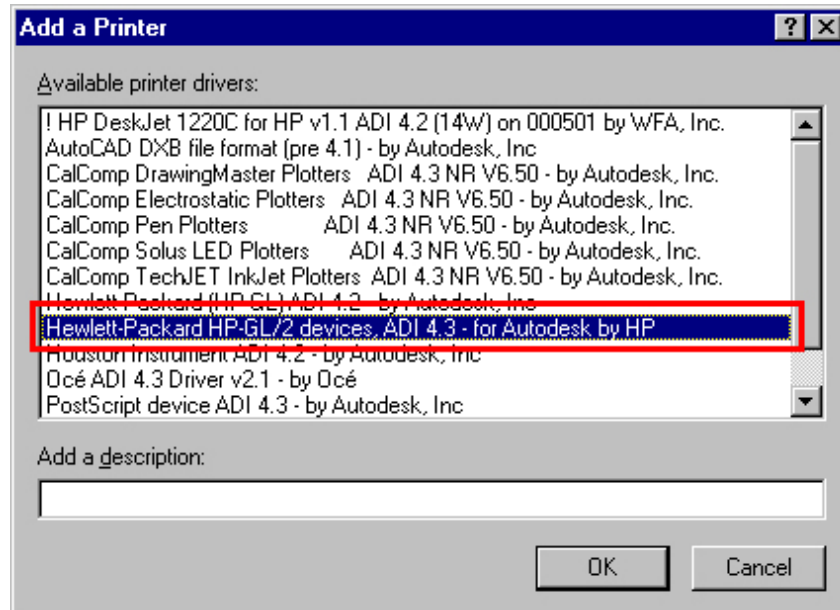
INSTRUCTIONS FOR PLOTTING TO A FILE PRE-AUTOCAD 2000

- b) If the HP Designjet 750C or HP Designjet 1050C printers are not in the printer list, **click New**. If you can see the required printer, then proceed to section 2.

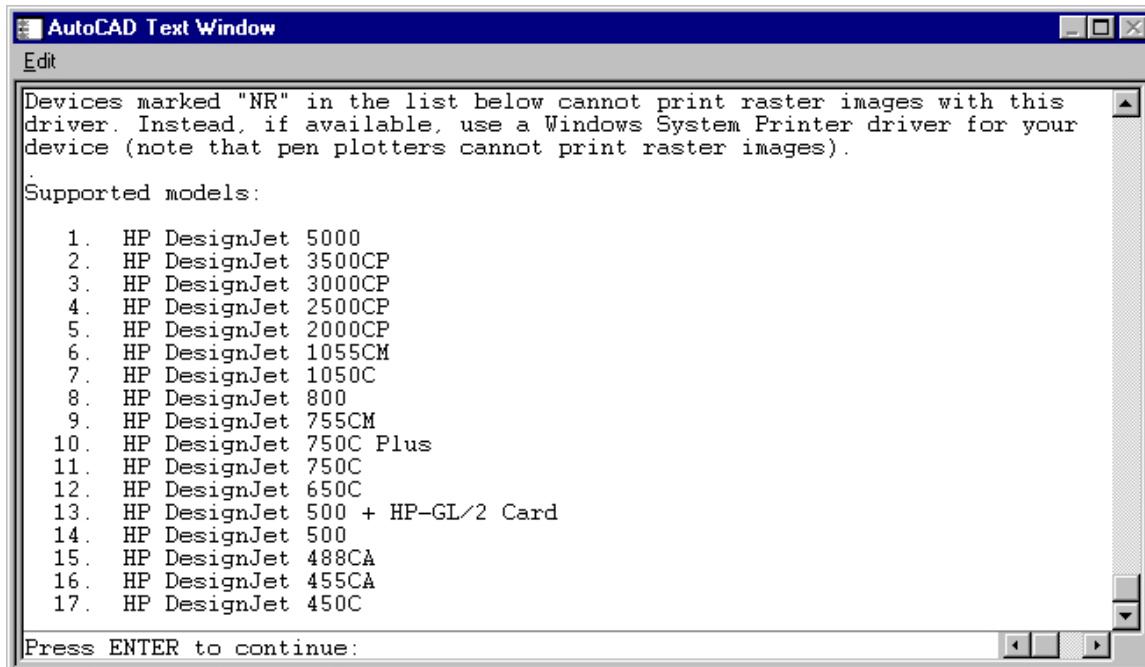


INSTRUCTIONS FOR PLOTTING TO A FILE PRE-AUTOCAD 2000

- c) **Select Hewlett-Packard HPGL/2 decives, ADI 4.3 – for Autodesk by HP**



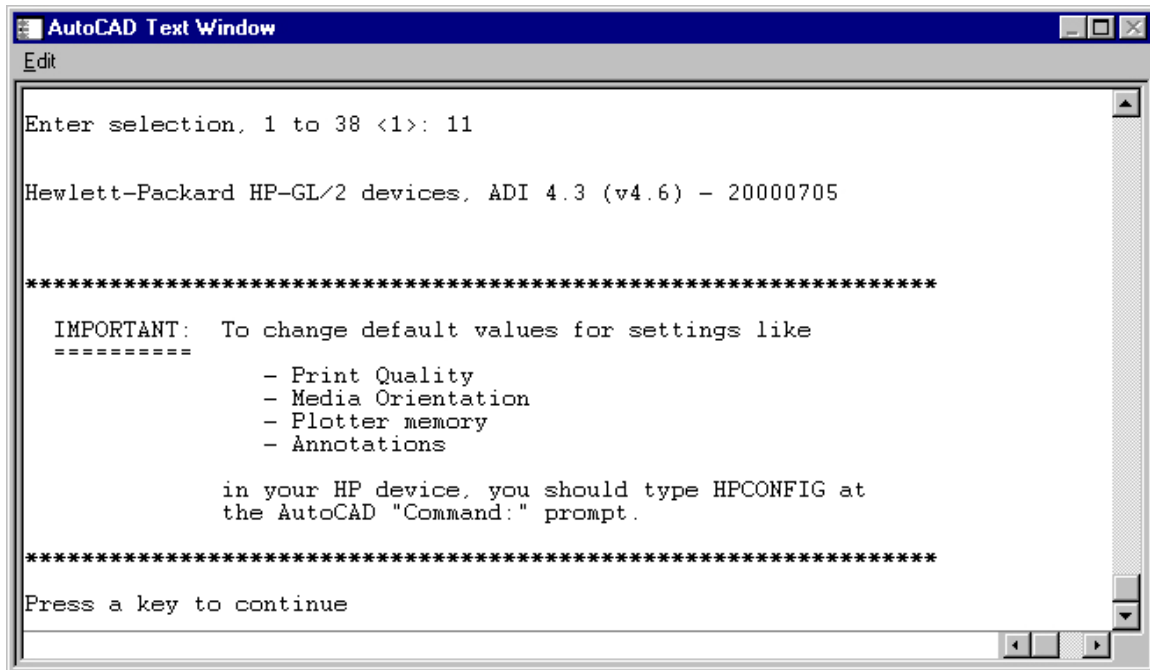
- d) **Press ENTER**



INSTRUCTIONS FOR PLOTTING TO A FILE PRE-AUTOCAD 2000

- e) For HP DesignJet 750C select item 11 – (*you will need to type in 11*). Then press ENTER continue.

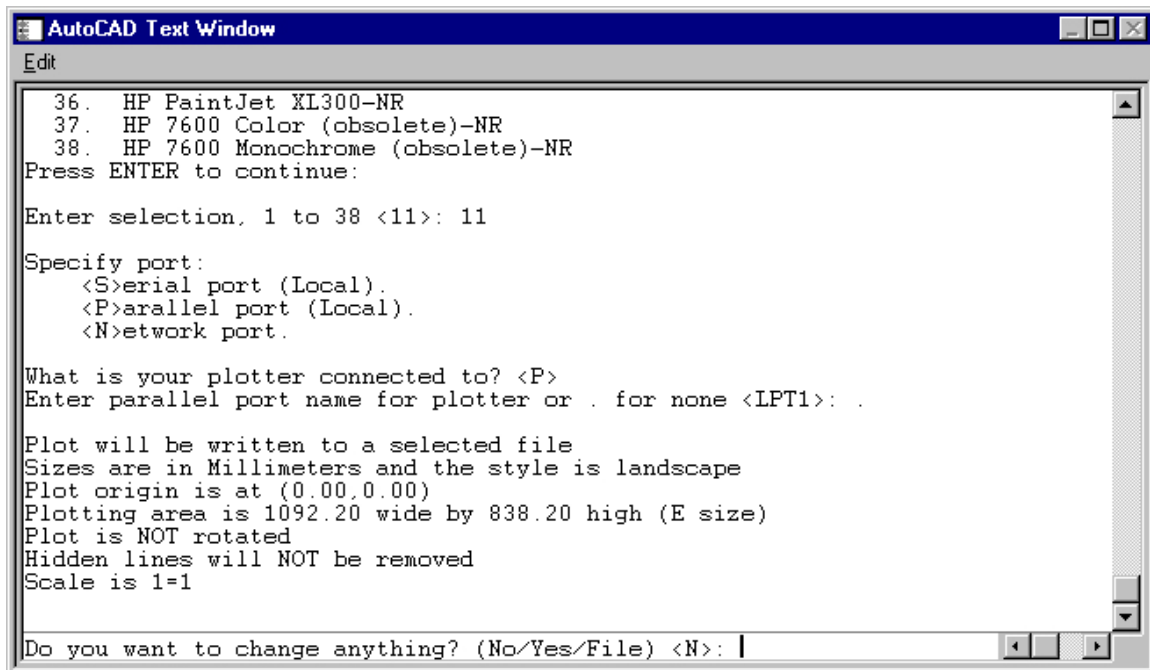
For HP DesignJet 1050C select item 7 – (*you will need to type in 7*). Then press ENTER continue.



INSTRUCTIONS FOR PLOTTING TO A FILE PRE-AUTOCAD 2000

f) On request enter the following values:

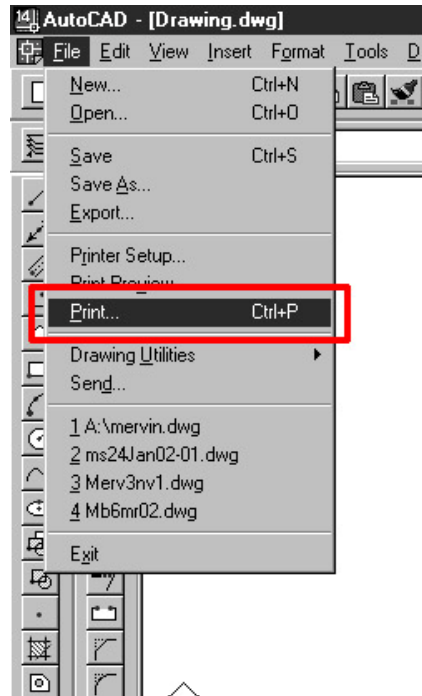
- | | | |
|-----|------------------------------------|-----------------------------|
| 1 – | What is your plotter connected to? | Select PARALLEL PORT |
| 2 - | Enter parallel port name: | Select LPT1 |
| 3 - | Do you want to change anything | Select NO |



```
AutoCAD Text Window
Edit
36. HP PaintJet XL300-NR
37. HP 7600 Color (obsolete)-NR
38. HP 7600 Monochrome (obsolete)-NR
Press ENTER to continue:
Enter selection, 1 to 38 <11>: 11
Specify port:
  <S>erial port (Local).
  <P>arallel port (Local).
  <N>etwork port.
What is your plotter connected to? <P>
Enter parallel port name for plotter or . for none <LPT1>: .
Plot will be written to a selected file
Sizes are in Millimeters and the style is landscape
Plot origin is at (0.00,0.00)
Plotting area is 1092.20 wide by 838.20 high (E size)
Plot is NOT rotated
Hidden lines will NOT be removed
Scale is 1=1
Do you want to change anything? (No/Yes/File) <N>: |
```

INSTRUCTIONS FOR PLOTTING TO A FILE PRE-AUTOCAD 2000

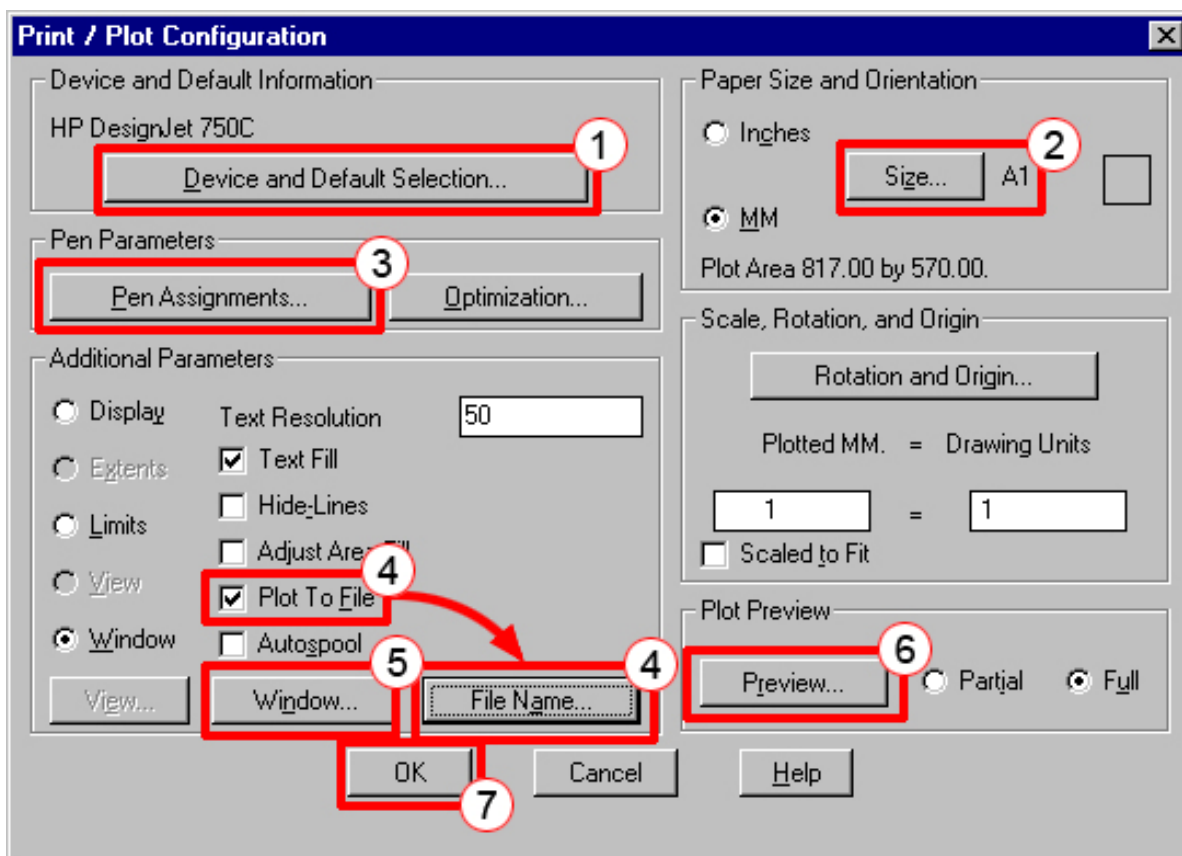
- 2) **Plotting to a file in AutoCAD 14**
 - a) Select **PRINT** from the File menu.



INSTRUCTIONS FOR PLOTTING TO A FILE PRE-AUTOCAD 2000

b) In the **Print / Plot configuration dialog box**:

- 1 – Select the HP DesignJet 750C or 1050C Printer
- 2 – Select Drawing size
- 3 - If you require different thicknesses to the line in your drawing, you can assign these thickness to particular colours in the **Pen Assignments** dialog box.
- 4 - Check the **Plot to file** box and browse for a location to save the plot file..
- 5 - 'Window' the portion of the drawing you wish to print.
- 6 - If you wish to see how the drawing will print, click **Preview**.
- 7 - Click OK. When you do this, the plot file will be created and saved to location you chose in step 5.



INSTRUCTIONS FOR PLOTTING TO A FILE PRE-AUTOCAD 2000

The plot procedure is now complete.

- Go to **www.hdfinch.co.uk**
- Click on **Submit a plot file**
- **Follow the instructions to upload the plot file.**